

MEGA 300v

- Operating Weight : 17,300kg (38,139lb)
- Bucket capacity (SAE) : 2.9~3.5 m³ (3.8~4.6cu.yd)
- Engine Power :
 - Gross(SAE J1995):
Rated : 156kW, 209HP, 212ps / 2,100rpm
 - Net(SAE J1349)
Rated : 153kW, 205HP, 208ps / 2,100rpm



Photo may include optional equipment



**Thank you very much
for reading.**

PLEASE CLICK HERE

Then back to the site.

At the bottom of the

page,

free add to card.

Then get more free

Anything's Possible with You and



CONTENTS

- Performance
- Comfort
- Maintenance
- Reliability
- Standard Equipment & Optional Equipment
- Specifications
- Operational data



DOOSAN **Powerful Wheel Loader**



Performance

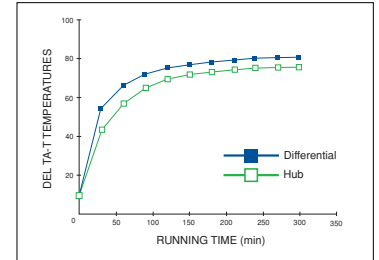
The Mega 300-V is a machine that delivers a powerful, highly effective force, offering superior penetration of the hardest materials. The exceptional drawbar pull at the wheels, is reinforced further by providing limited-slip differentials as standard equipment. The engine offers high power and torque characteristics. As a result, the hydraulic system is able to multi-function with power and speed.

ZF Axle

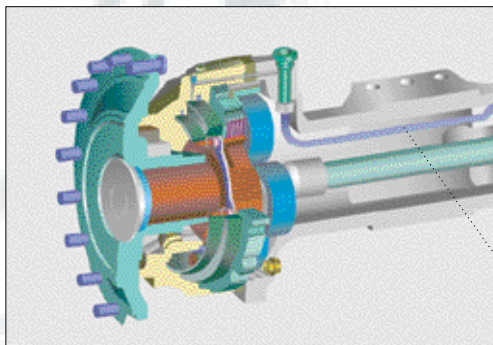
Improved internal oil flow greatly reduced the temperature difference between the hub and the differential, as well as prevents premature disc wear due to overheating of the internal hub components.

LSD (Limited Slip Differential)

The standard equipment LSD allows easy driving through soft and swampy grounds.



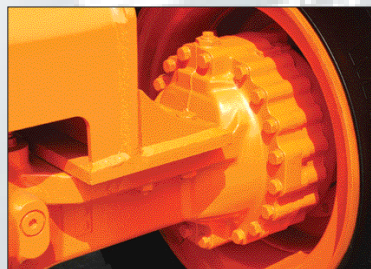
• This result may change according to test condition



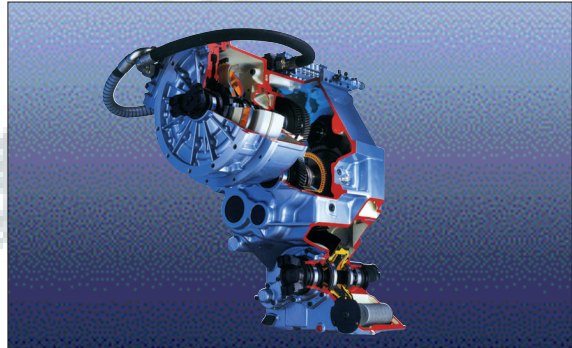
Increased Axle durability

The brake discs have been repositioned to the rear part of the reduction gear where the rotation speed is lower. As a result, the discs are exposed to lower rpm's and heat generation is reduced and the life span of the discs is greatly extended. Automatic disc clearance regulator has been integrated into the design and the disc clearance is maintained at the optimum level at all times as the discs wear out. This prevents any lag in brake response. Another convenient feature is that brake disc wear can easily be measured without disassembling the hub.

The brake piping has been redesigned into the axle housing and is protected from damage from external shock as the machine drives over rough terrain.



MEGA 300v

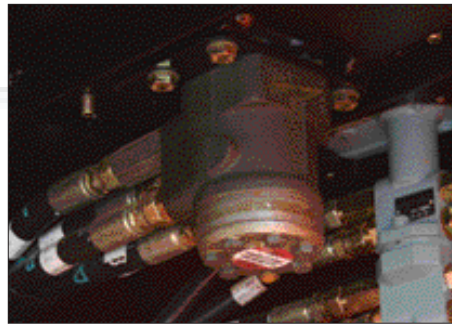


⚡ Turbo Charged-Air Cooled Intercooler Engine

Our many years of experience in engine design and production have resulted in the emergence of a highly efficient and very powerful engine that boasts the highest power in its class.

⚡ Full Auto Transmission

The transmission is particularly smooth and gear ratios perfectly spaced to give optimal speed. That gives comfort at the same time that it delivers excellent traction in every working conditions. All of these characteristics, combined, provide a machine that makes good shovel penetration.



⚡ Electro Hydraulic Power steering

The newly designed steering system ensures smooth steering even in the low engine speed ranges.
- Steering control valve



⚡ Axle Oscillation Outstanding Work Safety (oscillation)

The center pin support system rear axle can maintain the machine in the horizontal position even in rough terrain achieving the maximum safe operating and driving performance.

Comfort

From the beginning, Doosan has had great concern for machine operators.

People need to work in a well-designed and comfortable environment. The work area is spacious, with several places for storage. The checking and monitoring devices are comprehensive. There is an open view of the work area. For night work, operators are provided with powerful front and rear lighting.



❖ The steering Column

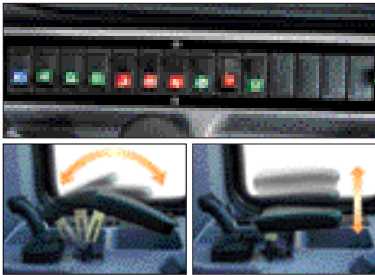
The steering column features both tilting and telescopic functions.



❖ Central Monitor Panel

The compact central monitor panel is ergonomically designed and allows the operator to monitor the status and warning lights at a single glance.

MEGA 300V



Switch & Wrist rest

The ergonomically laid out switch panel in line with the natural movements of the body allows for very convenient operation. The spare switch cut-outs allows easy installation of additional electric accessories. The tilting and telescopic wrist rest allows the operator to work more comfortably.



Various Control Lever

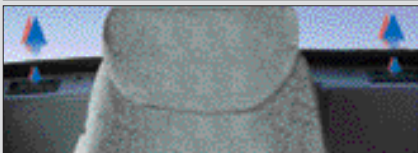
The joystick installed in compliance with various needs and preferences of operators ensures more convenient work.

- Left : Mono lever and 3rd function. (option)
- Right : Two hydraulic levers with 3rd function electric s/w. (option)



Air-Suspension Seat

Now available Air-suspension seats provide more comfort and support for the operator.(option)



Air Conditioning & Defroster System

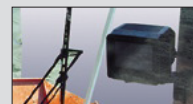
Double filtered air cab, air ducts are properly placed all around the cab with proportional sensitive controls and air re-circulation facility. we offer the same comfort as a passenger car.



Sunvisor(std.)



Room mirror(std.)



CCTV monitor(option)

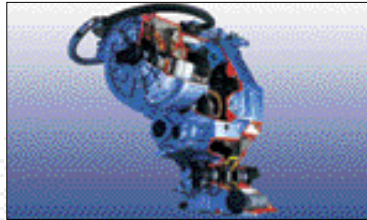
Various Comfort Features

Maintenance

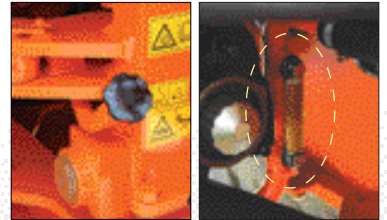
A liquid crystal display conveys information to the operator relative to the ZF transmission. At the same time, it reports the nature of a problem (if one exists). When servicing the loader, a specialised apparatus can be used to adjust the clutch disks to compensate for their wear. Additionally, by connecting a lap top computer, a complete transmission diagnostic can be performed.



- ⌘ **Swing Out Cooling Fan**
Our fan assembly has been designed with the one touch swing out mechanism and cleaning the radiator core is very easy.



- ⌘ **Large Capacity Transmission Oil Cooler**
The large capacity transmission oil cooler ensures durable and stable operation of transmission.

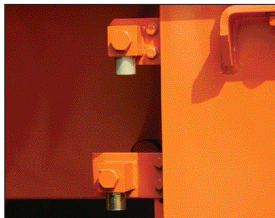


- ⌘ **Convenient Transmission Oil Filling**
Because the transmission oil level gauge is attached to the oil filler pipe, it is easy to visually check the level while filling. In addition, the oil filler pipe is located near the articulation joint for easy access.



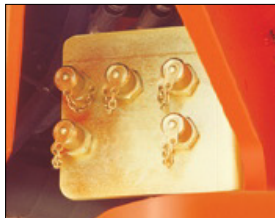
- ⌘ **Transmission Diagnosis**
The transmission can be diagnosed using a laptop computer to interface with the diagnostic system.

MEGA 300V



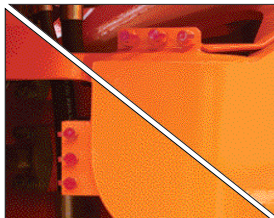
Remote Engine oil & Coolant Drain

Remote drain valves have been installed in an easily accessible location for convenient draining of fluids.
(Coolant - upper, Engine oil - lower)



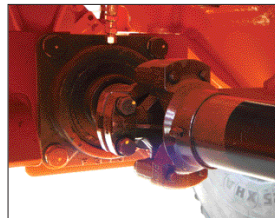
Central Remote Hydraulic Check Port

The centralized remote hydraulic check ports allow main, steering, brake charge, pilot, and transmission clutch pressures to be checked at a convenient central location.



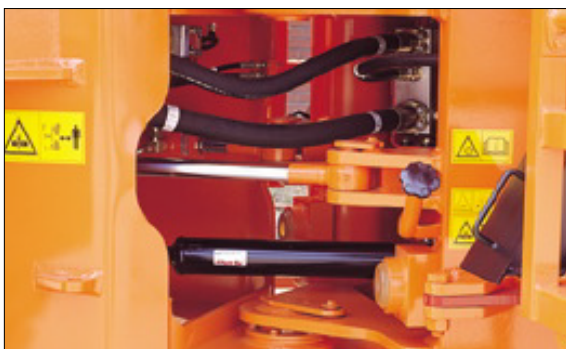
Greasing Lubrication Ports

The front pins can be lubricated from the outside of the machine without crawling under the machine or in awkward positions through the lubrication ports.

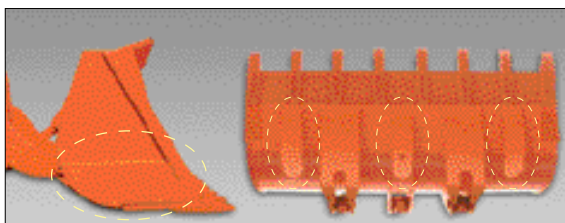


Propeller Shaft

A protective cover has been installed to protect the oil seal from dust, foreign objects and premature wear.



A good accessibility at the articulation joint is essential for an easy maintenance.



Reinforced Bucket

The lower and side panels of the bucket have been reinforced with additional plates (std).

- Reinforcement : At both sides - 1 point each
- At lower panel - 3 point



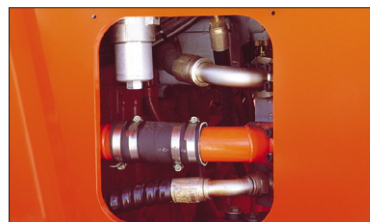
Transmission Filter

The transmission filters are within easy reach and like the rest of the machine's service components, can be checked from ground level.



Air-cleaner Filter

The high capacity air cleaner eliminates harmful particles from the air and extends the life of the engine and replacement intervals.



Brake & Pilot Filter

The pilot filter is easy to replace and a clogged filter warning system has been added for extra protection.

Reliability

Every morning, when the operators commence work, they know that things will go smoothly- because Doosan has taken care of it. The product is sold. Operators know that they have significant reserves at hand and that they won't have to push the machine to its limit. The Doosan Daewoo Mega-300 wheel loader is designed and built to last. For Doosan, 'reliable' means availability, accessibility and simplicity.



❖ Anechoic chamber Test

For absolutely accurate noise measurements-mainly of engines and hydraulic components which generate noise. Noise reduction test are conducted here which contribute to quieter finished products.



❖ Climate Chamber Test

Within the chamber, capable of accommodating the largest wheel loader, machines are tested in extremes of heat, cold and humidity. These conditions simulate the worst to be found anywhere in the world.



❖ Rolling Road Chassis Dynamometer Testing

Road travelling performance of articulated wheel loaders is measured and assessed in this facility. Acceleration braking, tractive effort, heat dissipation and gearing are all studied under controlled conditions in this modern facility.



❖ 24/7 Ware house operation

Quick responding parts system secures your reliability in running our product.



❖ ROPS Cabin (Rollover Protective Structure)

ROPS Meets The Following Criteria

- SAE J 394
- SAE 1040
- ISO 3471



❖ FOPS Cabin (Falling Objects Protective Structure)

FOPS Meets The Following Criteria

- SAE J 231
- ISO 3449

Standard equipment & Optional equipment

Standard Equipment

Engine

- Two stage air cleaner with pre-cleaner and external plugging indicator as at the dashboard
- External drains for engine oil and cooling liquid changes
- Maintenance warning lamp
- Hydraulic fan with adjustable speed for extreme temperatures

Electric System

- Alternator 60A / 24 V
- Working lights: 2 at the front and 2 at the rear (4 x 70 W)
- Driving lights: low and high beams
- Tail, indicators, stop, reversing lights
- Reversing alarm

Drive line

- Gear box which can be declutched when braking
- Gear box with diagnosis and monitoring indicator, and electronic plug for a fast adjustment
- Selection of Manual or Automatic mode
- Starting safety system
- Kickdown and travelling direction selection: lever at left of the steering wheel or on the joystick
- Limited slip differential on front and rear axles
- Dual braking circuit with pump and accumulator
- Tire 23.5 - 25 - 16PR (L3)

Lifting and Hydraulic system

- Robust Z bar lifting system
- Standard general purposes 3.0m³ bucket
- Single lever joystick
- Hydraulic control valve with two sections
- Boom adjustable lift Kick out
- Bucket kick out
- Fast couplers for hydraulic check

Steering system

- Load sensing steering system

Cab

- Air-conditioning / heating with recirculation function
- Double Filtered air cab
- Mechanical suspension seat with safety belt
- Adjustable steering column
- Compartment for cans
- Floor mat
- Tinted glasses
- Left sliding window
- Front and rear wiper
- Front and rear washers
- Sun visor
- Interior cab light
- Interior rear view mirrors (1)
- Exterior rear view mirrors (2)
- Machine monitoring (condition, control & maintenance indicators in front of the driver by dials, gauges and lamps)
- Main switches in front of the driver
- Switches for the general functions in the right console
- Electrical horn
- Cigarette lighter
- Cassette radio AM / FM

External equipments

- Mudguard
- Lower protection plates
- Lifting hooks
- Articulation lock in the transport position
- Towing hitch
- Wheel chocks
- Tools compartment

Optional equipment

Some of these optional equipments may be standard in some markets.

Some of these optional equipments cannot be available on some markets. You must check with the local Doosan dealer to know about the availability or to release the adaptation following the needs of the application.

Ground engaging tools

- Various types of buckets, fork pallette, timber grapples and accessories

Tires

- L3, L5 following various types of manufacturers

Hydraulic

- Hydraulic control valve with 3 sections
- FNR mono lever and 3rd function lever for third hydraulic
- Two hydraulic levers with 3rd function electric s/w for the third hydraulic
- Two hydraulic levers with 3rd function electric s/w for the third hydraulic with FNR function
- Load isolation system (LIS)
- Emergency steering pump driven by electric motor

Electric system

- Rotating beacon

Cab

- Air Suspension seat with 3" safety belt
- Rear Camera (CCTV) and monitor

Various

- Full covering mudguard
- Fuel filling pump
- Tool Kit

Specifications



Engine

General description

The High performance Doosan DE08TIS 6 cylinders, direct injection, turbo charged, air-air intercooler engine offers low fuel consumption and low exhaust emissions, which are well below the requirements of the Phase II legislation.
(Phase I Area : Doosan D1146TIA Engine)

Power :

- GROSS SAE J1995

Rated:

156 kW
209 HP
212 ps

@ 2,100 rpm

- NET SAE J 1349

Rated:

153 kW
205 HP
208 ps

@ 2,100 rpm

Max Torque:

92 kgf.m
902 Nm
667 lbf.ft

@ 1,300 rpm

Displacement:

8,070 cc (492cu.in)

Bore x stroke:

111 x 139 mm (4.4" x 5.5")

3 stages Air cleaner including a very efficient pre-cleaner, main and safety elements.

Hydraulically driven puller type fan with possibility of adjustment, pivoting fan for easier cleaning

Battery

System voltage : 24 V
Quantity : 12 V x 2
Capacity(AMP) : 150 Ah

Starter power:

6.6 kW

Alternator output:

60 A



Axles

The front and rear axles with planetary hub reductions are built on the base of very reputed components.

Fitted as standard, the front and rear limited slip differentials, ensure the traction is optimal in all circumstances.

Maker and model:

ZF MT-L3000 Series

Max torque transfer at the front and at the rear:

45 %

Oscillation angle:

+/- 12 °

Brake:

Dual circuit multi-plate wet discs.
Hydraulic actuation with pump and accumulator.

A Spring applied and hydraulically released parking brake is mounted on the transmission shaft.



Transmission

"Full Power Shift " transmission. It can be used in manual or automatic modes.

This transmission is based on components having excellent worldwide reputations. It is equipped with a modulation system allowing soft gear shifting and inversion of travel direction. Safety devices also protect the transmission of bad operations.

The gear and direction shifting is operated by a single lever to the left of the steering wheel. A travel direction control is also mounted on the hydraulic joystick.(Option)

With a special electronic device, the transmission can be tested and adjusted easily for optimum performance and efficiently.

The transmission can be de-clutched by the operation of brake pedal to increase the power available to the hydraulic pumps.

A safety device prevents the starting of the engine when not in neutral.

Torque converter:

Single stage, one phase
Max Torque ratio
3.06

Gear box:

Maker and model
ZF 4 WG 210

Speed Forward / Rearward:

(Tire 23.5 - 25 - 16PR - L3)

1	6.5 / 6.8 km/h (4.0 / 4.2 mph)
2	12 / 12.7 km/h (7.4 / 7.9 mph)
3	22.5 / 23.8 km/h (14.0 / 14.8 mph)
4	34 km/h (21.1 mph)

Max traction force:

17 tons (37,478 lb)





Hydraulic System

The hydraulic system uses tandem vane pumps with automatic wear compensation.

Pilot actuation with standard single lever.

Automatic and adjustable systems for bucket kick out and boom stop at top position are standard.

The leveling function is also mounted on the wheel loader.

Major hydraulic lines are equipped with special seals (ORFS)

Max flow main:

(With steering)

130 ℓ / min (33.3g / min)

(Without steering)

275 ℓ / min (72.7g / min)

Relief Pressure:

200 bars

Pressure of the pilot circuit:

28 bars

Filtration capacity on the return line:

10 microns

Loading cycles time:

Lifting speed (loaded) :
6.0 seconds

Dumping speed (loaded):
1.5 seconds

Lowering speed (empty):
3.6 seconds



Operators' Cab

The modular cab allows excellent visibility in all directions. The optimal ventilation is obtained by numerous ventilation outlets. Touch buttons control the air re-circulation air conditioning and heating systems. The air of the cab is filtered.

All necessary information for the operator are centralized in front of him.

The main functions are actuated via switches located on a console at the right of the operator.

Generous storage places are well located. The cab, mounted on viscous element and equipped with an air suspended seat, offers a better comfort for the operator.

Access door: 1

Emergency exits: 2

The cab conforms ROPS ISO 3471 and FOPS : ISO 3449

Guaranteed external noise level Lwa:
(following 2000 / 14 / EC) 108 dB (A)



Steering

The steering system is a load sensing type with a flow amplifier and a priority valve.

Steering angle:
40°

Oil flow:
145 ℓ / min (38.3 gal / min)

Relief pressure:
175 bars

Steering cylinders (2):
bore x stroke : 80 x 450 mm (3.2" x 1'6")

Emergency steering system with hydraulic pump driven by electric motor.(Option)



Lifting System

The lifting system with two cylinders and Z configuration is designed for the toughest jobs. The breakout force (18 ton with a 3.0m³ bucket) is very important and the bucket movements are fast.

The bucket angles are well kept in good positions on all the range of bucket movement.

Lifting cylinders (2)

bore x stroke (mm) :
150 x 831 mm (5.9" x 2'9")

Bucket cylinders (1)

bore x stroke (mm) :
190 x 495 mm (7.9" x 1'8")



Maintenance

Maintenance is easy due to excellent access.

The radiator fan swivels to aid cleaning.

The transmission is electronically controlled. An error coding system allows easy diagnosis of the systems and proper intervention.

Engine (oil): 21 ℓ (5.6 gal)

Radiator
(cooling liquid): 50 ℓ (13.2 gal)

Fuel: 330 ℓ (87.2 gal)

Hydraulic oil: 210 ℓ (55.5 gal)

Gear box and
torque converter: 48 ℓ (12.7 gal)

Front axle: 38 ℓ (10.0 gal)

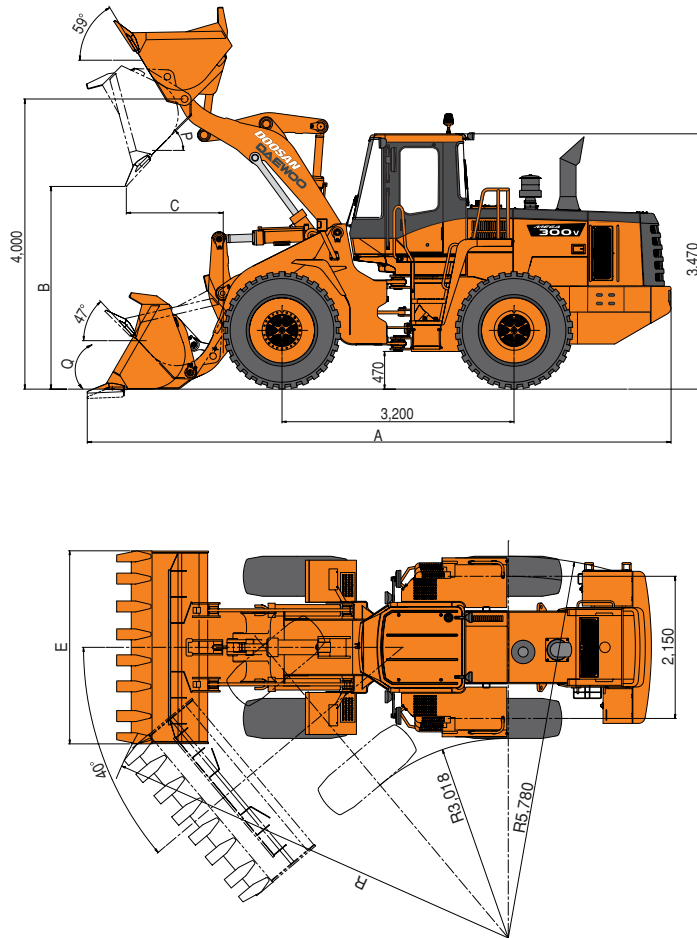
Rear axle: 30 ℓ (7.0 gal)

Operational data

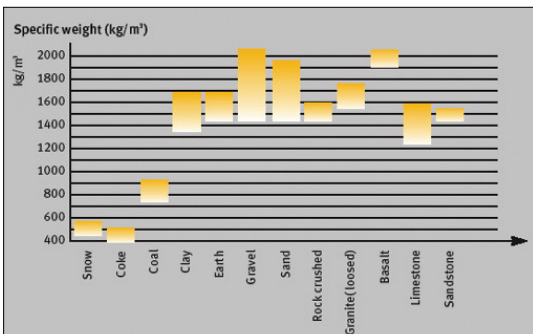
Bucket type	Unit	General purpose			
		Teeth	Teeth(standard)	Teeth	Cutting edge
Capacity heaped	m ³ (yd ³)	2.9 (3.8)	3.0 (3.9)	3.1 (4.1)	3.1 (4.1)
Bucket weight	kg(lb)	1,356 (2,989)	1,500 (3,307)	1,514 (3,338)	1,493 (3,291)
Bucket width	E mm(ft.in)	2,920 (9'7")	2,920 (9'7")	3,110 (10'2")	2,920 (9'7")
Static tipping load, straight	kg(lb)	13,500 (29,762)	13,435 (29,619)	13,370 (29,475)	13,354 (29,440)
Full turn (40°)	kg(lb)	11,100 (24,470)	10,950 (24,140)	10,800 (23,810)	10,915 (24,063)
Breakout force	kg(lb)	18,500 (40,785)	18,470 (40,719)	18,440 (40,653)	18,440 (40,653)
Dump height at 45°	B mm(ft.in)	2,780 (9'2")	2,780 (9'2")	2,780 (9'2")	2,898 (9'6")
Dump reach at 45 °	C mm(ft.in)	1,279 (4'2")	1,279 (4'2")	1,279 (4'2")	1,157 (3'10")
Digging depth	mm(ft.in)	76 (3")	76 (3")	76 (3")	76 (3")
Turning radius at bucket	R mm(ft in)	6,400 (21')	6,400 (21')	6,495 (21'4")	6,400 (21')
Max. tilt angle on ground	Q dge	42°	42°	42°	42°
Max. dump angle at fully raised	P dge	47°	47°	47°	47°
Overall length	A mm(ft in)	8,085 (26'6")	8,085 (26'6")	8,085 (26'6")	7,930 (26')
Overall height	mm(ft in)	3,470 (11'5")	3,470 (11'5")	3,470 (11'5")	3,470 (11'5")
Ground clearance	mm(ft in)	470 (1'7")	470 (1'7")	470 (1'7")	470 (1'7")
Wheel base	mm(ft in)	3,200 (10'6")	3,200 (10'6")	3,200 (10'6")	3,200 (10'6")
Width at tire	mm(ft in)	6,325 (20'9")	6,325 (20'9")	6,325 (20'9")	6,325 (20'9")
Tread	mm(ft in)	2,150 (7'1")	2,150 (7'1")	2,150 (7'1")	2,150 (7'1")
Tire		23.5 - 25 - 16PR(L3)	23.5 - 25 - 16PR(L3)	23.5 - 25 - 16PR(L3)	23.5 - 25 - 16PR(L3)
Operating weight	kg(lb)	17,156 (37,822)	17,300 (38,139)	17,315 (38,173)	17,437 (38,441)

Bucket type	Unit	General purpose		Light bucket	
		Cutting edge	Teeth	Cutting edge	Cutting edge
Capacity heaped	m ³ (yd ³)	3.2 (4.1)	3.3 (4.3)	3.3 (4.3)	3.5 (4.6)
Bucket weight	kg (lb)	1,643 (3,622)	1,550 (3,417)	1,650 (3,638)	1,687 (3,719)
Bucket width	mm (ft.in)	2,920 (9'7")	2,920 (9'7")	3,110 (10'2")	2,920 (9'7")
Static tipping load, straight	E kg (lb)	13,338 (29,405)	13,310 (29,343)	13,322 (29,370)	13,207 (29,116)
Full turn (40°)	kg (lb)	10,902 (24,034)	10,879 (23,984)	10,889 (24,006)	10,794 (23,796)
Breakout force	kg (lb)	18,430 (40,631)	18,380 (40,520)	18,420 (40,609)	18,237 (40,205)
Dump height at 45°	mm (ft.in)	2,898 (9'6")	2,780 (9'2")	2,898 (9'6")	2,898 (9'6")
Dump reach at 45 °	B mm (ft.in)	1,157 (3'10")	1,279 (4'2")	1,157 (3'10")	1,157 (3'10")
Digging depth	C mm (ft.in)	76 (3")	76 (3")	76 (3")	76 (3")
Turning radius at bucket	mm (ft in)	6,400 (21')	6,400 (21')	6,495 (21'4")	6,400 (21')
Max. tilt angle on ground	R dge	42°	42°	42°	42°
Max. dump angle at fully raised	Q dge	47°	47°	47°	47°
Overall length	P mm (ft in)	7,930 (26')	8,085 (26'6")	7,930 (26')	7,930 (26')
Overall height	A mm (ft in)	3,470 (11'5")	3,470 (11'5")	3,470 (11'5")	3,470 (11'5")
Ground clearance	mm (ft in)	470 (1'7")	470 (1'7")	470 (1'7")	470 (1'7")
Wheel base	mm (ft in)	3,200 (10'6")	3,200 (10'6")	3,200 (10'6")	3,200 (10'6")
Width at tire	mm (ft in)	6,325 (20'9")	6,325 (20'9")	6,325 (20'9")	6,325 (20'9")
Tread	mm (ft in)	2,150 (7'1")	2,150 (7'1")	2,150 (7'1")	2,150 (7'1")
Tire		23.5 - 25 - 16PR(L3)	23.5 - 25 - 16PR(L3)	23.5 - 25 - 16PR(L3)	23.5 - 25 - 16PR(L3)
Operating weight	kg (lb)	17,437 (38,441)	17,494 (38,567)	17,444 (38,457)	17,631 (38,869)

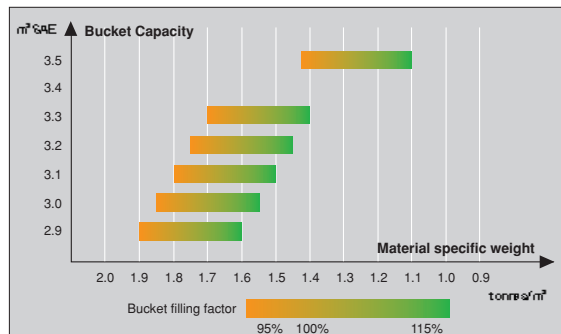
Dimensions



- Measured to the tip of the bucket teeth or bolt on edge with tires 23.5 - 25 - 16PR (L3)



The specific weight of material largely depends on moisture rate, compacting value, percentage of various components etc... This chart is given only for information.



The bucket filling factor depends also of the nature of material, the working conditions and the operator ability.



Seoul Office

Doosan Tower 26TH FL. 18-12, Euljiro-6Ga,
Jung-Gu, Seoul, Korea 100-730
Tel : +82-2-3398-8114 Fax : +82-2-3398-8117
Website : www.doosaninfracore.com

Doosan Infracore Europe S.A.

1A, Rue Achille Degrace, 7080 Frameries, Belgium
Tel : +32-65-61-3231 Fax : +32-65-61-3238

Doosan Infracore U.K., Ltd.

Doosan House, Unit 6.3, Nantgarw Park, Cardiff CF47QU, U.K.
Tel : +44-1443-84-2273 Fax : +44-1443-84-1933

Doosan Infracore Germany GmbH.

Hans-Böckler strasse 29, D-40764, Langenfeld-Fuhrkamp, Germany
Tel : +49-2173-8509-20 Fax : +49-2173-8509-60

Doosan Infracore France

(Doosan Infracore Europe S.A. France Office)

2Eme Etage, 1/3 Avenue Pavlov, Z.A.I. Des Bruyeres,
78190 Trappes France
Tel : +33-1-3016-2140 Fax : +33-1-3016-2144

Doosan Infracore America Corporation

2905 Shawnee Industrial Way, Suwanee, Georgia 30024, U. S. A
Tel : +1-770-831-2200 Fax : +1-770-831-0480

Doosan Infracore (China) Co., Ltd.

#28, Wuzhishan Road, Eco & Tech, Development Zone,
Yantai, Shandong, China
Tel : +86-535-638-2000 Fax : +86-535-638-2004

Doosan Infracore Xinjiang Machinery Co., Ltd.

No. 178, Hetanbei Road, Wurumuqi, Xinjiang, China
Tel : +86-991-469-7217 Fax : +86-991-469-8641

Doosan Infracore Liaoning Machinery Co., Ltd.

No.32 DongLing Road, DongLing District, ShenYang, Liaoning, China
Tel : +86-24-8841-1407 Fax : +86-24-8841-1404

Doosan Infracore South Africa Pty Ltd.

60C Electron Road, Isando 1600, Johannesburg, South Africa
Tel : +27-11-974-2095 Fax : +27-11-974-2778

Distributed By:

Nationwide Equipment Company

11950 New Kings Road
Jacksonville, Florida USA 32219
Ph: (904) 924-2500 Email: sales@nwe-usa.com
www.NationwideEquipment.com PBP M300W5YT 0507

Specifications are subject to change without prior notice

Doosan 300v specs Excavation or excavating as its most usually and satisfactory regarded for is mostly a technique used in the technological know-how of archaeology. The man or woman sorts of excavation are regarded simply as digs to people who participate in, with this being an over literal description of the technique used. An excavation issues itself with a particular archaeological webweb page or associated collection of webweb sites, and can be carried on over a amount of years, thinking about that the paintings can normally instances typically be of a seasonal nature. doosan mega 300v specs

Inside of the enterprise of excavation, many lots greater strategies can be utilized, with each unmarried dig acquiring its very own precise traits which could necessitate variations of technique. Methods and different sensible problems do not permit archaeologists to carry out excavations each time and anyplace they choose, as many regarded webweb sites have additionally been intentionally left on my own and non excavated.

At first, excavation requires the eliminating any topsoil this is found with the aid of using an excavator machine. What is dug up can be reviewed with the aid of using a metallic detector for stray unearths however except the excavation webweb page has persevered to be untouched for a prolonged duration of time, there's a tiny layer of present day fabric at the floor this is of constrained archaeological interest.

In farm areas, any form of archaeological attributes need to be apparent underneath the floor. With city areas, they'll be thick layers of human deposits and simplest the uppermost may be seen to the bare eye. With both case, the first actual project is drawing a scaled webweb page plan which could display the rims of the excavation. This approach may be composed the usage of tape measures, or as it is greater not unusualplace those days, an digital general station. A grid is normally set up, to divide the webweb page.

Excavation is moreover beneficial for digging out homes and ditches. When clearing dust out for roads or sub divisions, excavation is what looks after matters. Even alevn though there are some means, the time period excavation is used each time that the earth or dust is disturbed. Heavy equipment is likewise very not unusualplace with excavation, consisting of excavator machines or backhoes. Excavating crews run the system and dig up soil and rocks for regardless of the cause can be. Excavator machines are the maximum normally used equipment, as they could flow some of dust in a touch little bit of time.

Anytime you're collaborating in excavation, you need to continually use clever practices and be safe. If you intend to get down right into a hollow or trench, you need to continually use a trench box. Even alevn though the hollow won't be that deep, excavation webweb sites can regularly give way and at that point - matters are very risky and probably even deadly. For digging up uncommon artifacts or installing homes or roads, excavation is a few aspect that has been round for years and years. There can be lots to discover with excavation, as you will want to discover

the satisfactory manner to run an excavator machine, shoot grade, and simply a way to nicely dig holes and ditches in order that they might not give way.

volvo

volvo dealer near me

front end loader

excavator contracts

pay loader

conexpo

volvo finance

volvo log

volvo financial services

volvo fina

care track

caretrack

wheel loader

wheeled loaders

wheel loaders

mining in chile

soil compactor

soil compactors

excavator volvo

volvo excavators

volvo excavator

volvo services

construction equipment volvo

volvo construction equipment

volvoce

excavators volvo

volvo 750 excavator

rock truck

rock trucks

conexpo las vegas 2020

480 volvo

volvo dumper truck

excavator wheeled

wheeled excavator

wheeled excavators

skid steer volvo

volvo skid steer

volvo skid steers

volvo skidsteer

construction excavators

articulate trucks

articulated truck

articulated trucks

volvo ec750e cost

volvo equipment

ascendum machinery

volvo loader

volvo loaders

dumper truck volvo

front end loader small

heavy equipment volvo

volvo heavy equipment

heavy equipment dealer near me

heavy equipment dealers near me

mini volvo excavator

volvo mini excavators

wheel loaders volvo

volvo wheel loader

wheel loader volvo

volvo wheel loaders

volvo wheeled loaders

volvo equipment dealership

volvo equipment dealer

volvo equipment dealers

volvo 750

swecon

asphalt compactors

asphalt compactor

volvo mini excavator

mini excavator volvo

volvo a40g

750 excavator

volvo a 40g

volvo ec 750e

volvo ec750e

volvo vdn

compactors asphalt

samsung excavators

samsung excavator

scat trak

volvo ecr 88

volvo ecr88

ecr88 volvo

volvo equipment dealer near me

volvo equipment dealers near me

volvo equipment dealership near me

volvo construction

volvo constructions

volvo ce

front end loader volvo

volvo backhoes

a60h volvo

volvo a60h

volvo excavator 480

excavator volvo 480

480 volvo excavator

volvo 700 excavator

volvo excavator 700

volvo haul truck

volvo shippensburg pa

volvo shippensburg pennsylvania

volvo front end loader

vantage equipment

volvo ec750e price

mini front end loader

volvo 750 excavator price

pipelayer

55c

45c

scat track

volvo l90

rock truck volvo

volvo rock truck

volvo dealer network

volvo articulated dump truck

articulated dump truck volvo

terex trucks

volvo 140 excavator

backhoe volvo

blaw knox

volvo 480 excavator

volvo backhoe

ingersoll rand roller

volvo 750 excavator specs

volvo articulated dump trucks

volvo excavator 140

volvo oceanrace

articulating trucks

road pavers

electric excavator

wheel excavators

dump truck volvo

electric excavators

guins

letsdig18

volvo construction equipment parts

champion motor graders

shippensburg volvo

volvo off road truck

volvo oils

volvo construction equipment dealer

volvo off road trucks

savage stone

volvo construction equipment dealers

volvo dozers

volvo l70 h

blaw knox pavers

volvo l70h

volvo 220
volvo 750 excavator specifications
volvo dozer
volvo machine
blaw knox paver
volvo a40
volvo machinery
big loaders
construction equipment supplier
scat trak skid steer
volvo ec140el
volvo l90 h
volvo a25g
a40f volvo
volvo a30g
volvo a40d
wheeled mini excavator
volvo a45g
volvo heavy equipment dealers
a30g volvo
champion graders
articulated truck volvo
wheeled mini excavators
champion grader
volvo construction equipment dealer near me
volvo 160
a25g volvo
volvo ecr88 specs
volvo heavy equipment dealer
is chris guins married

michigan loader

volvo l90h

volvo l 90h

ec 750 volvo

volvo heavy equipment dealership

volvo 750 excavator weight

volvo articulating truck

articulating truck

construction excavator

volvo dealer locator

volvo coolant

ex factor

excavadoras

construction equipment suppliers

turner mining group

volvo l 70

quarry aggregates

excavator bucket types

volvo l70

volvo roller

volvo 250

volvo 350

volvo equipment parts near me

l90 volvo specs

motor grader volvo

motor graders volvo

nearest volvo dealer

ecr 88d volvo

volvo excavator 220

volvo rollers

volvo ecr38

volvo rental equipment

a30d volvo

volvo l90 specs

gold rush excavator

volvo ec750e specs

volvo 290

volvo motor grader

volvo articulated truck

dd 24

vantage wear

roller volvo

volvo 160 excavator

volvo a40g specs

volvo equipment rental

volvo track hoe

volvo a60

volvo pavers

volvo 540

volvo motor graders

volvo 220 excavator

volvo equipment rentals

volvo graders

volvo paver

ecr88d volvo

volvo construction equipment usa

volvo l60 h

volvo shippensburg

volvo grader

conexpo las vegas

volvo articulated trucks

graders

mini front end loaders

pacwest machinery

hwy equipment

pipelayers

front end loaders

equipment dealer near me

volvo dump truck

equipment dealerships

romco equipment

equipment dealers near me

doosan mega 300v

doosan mega 300v specs

doosan mega 300-v

doosan mega 300v pdf

**Thank you very much
for reading.**

PLEASE CLICK HERE

Then back to the site.

At the bottom of the

page,

free add to card.

Then get more free