

Fig 16.

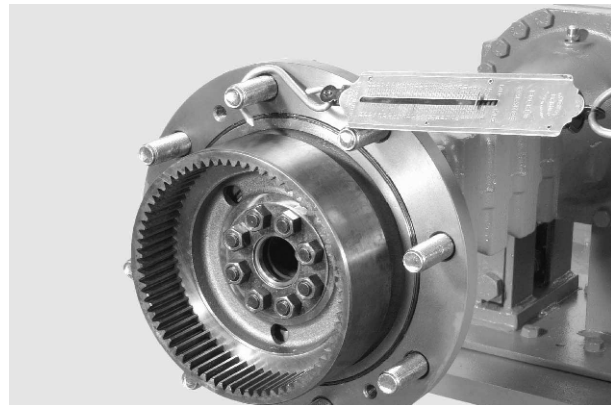


Fig 18.

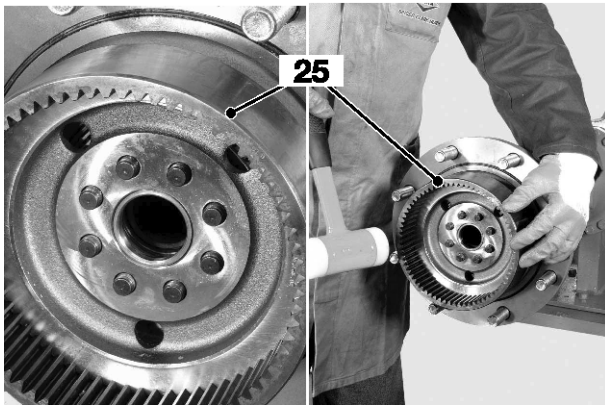


Fig 17.

- 14 Check the condition and position of the O-ring 27, replace if necessary. → [Fig 19.](#) (□ F-15)

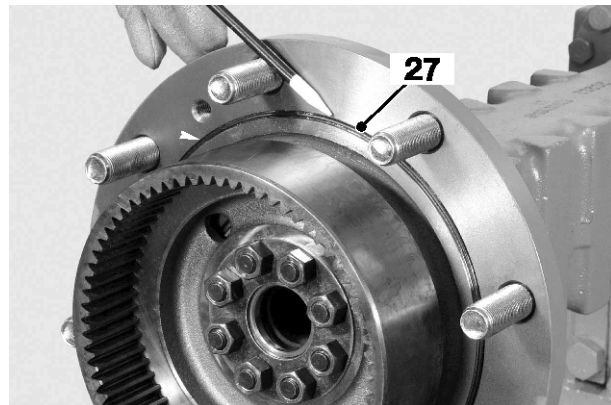


Fig 19.

- 10 Lightly lubricate the face of the safety-flange 14, which touches the annulus-carrier 13 with JCB HB grease. Install the safety-flange.
- 11 Apply a layer of JCB Threadlocker and Sealer to the nuts 23, then screw them onto the studs 24.
- 12 Torque the nuts 23 in two stages with a criss-cross method. → [Table 3. Torque Settings](#) (□ F-15)
- 13 Check that the hub has a continuous rolling-torque of 7 - 20 Nm (62 - 177 lbf-in.). → [Fig 18.](#) (□ F-15)

Note: If the rolling-torque is outside the limits, make sure that: the hub-seal and the bearing-tracks (if removed) are installed correctly. It may be necessary to replace the inner and outer hub-bearings to get the correct rolling-torque.

- 15 Install the axle half shaft 29, make sure that its correctly put into the brake discs and the differential unit.
- 16 Install the assembled planetary gear-housing 18 onto the wheel hub 28.
- 17 Install and torque the two screws 20. → [Table 3. Torque Settings](#) (□ F-15).

Table 3. Torque Settings

Item	Notes	Nm	Kgf/m	lbf/ft
23	1st Stage	90	9.1	66.4
	2nd Stage	100	10.2	73.8
20		40 - 50	4.0 - 5.0	29.5 - 37

C008390

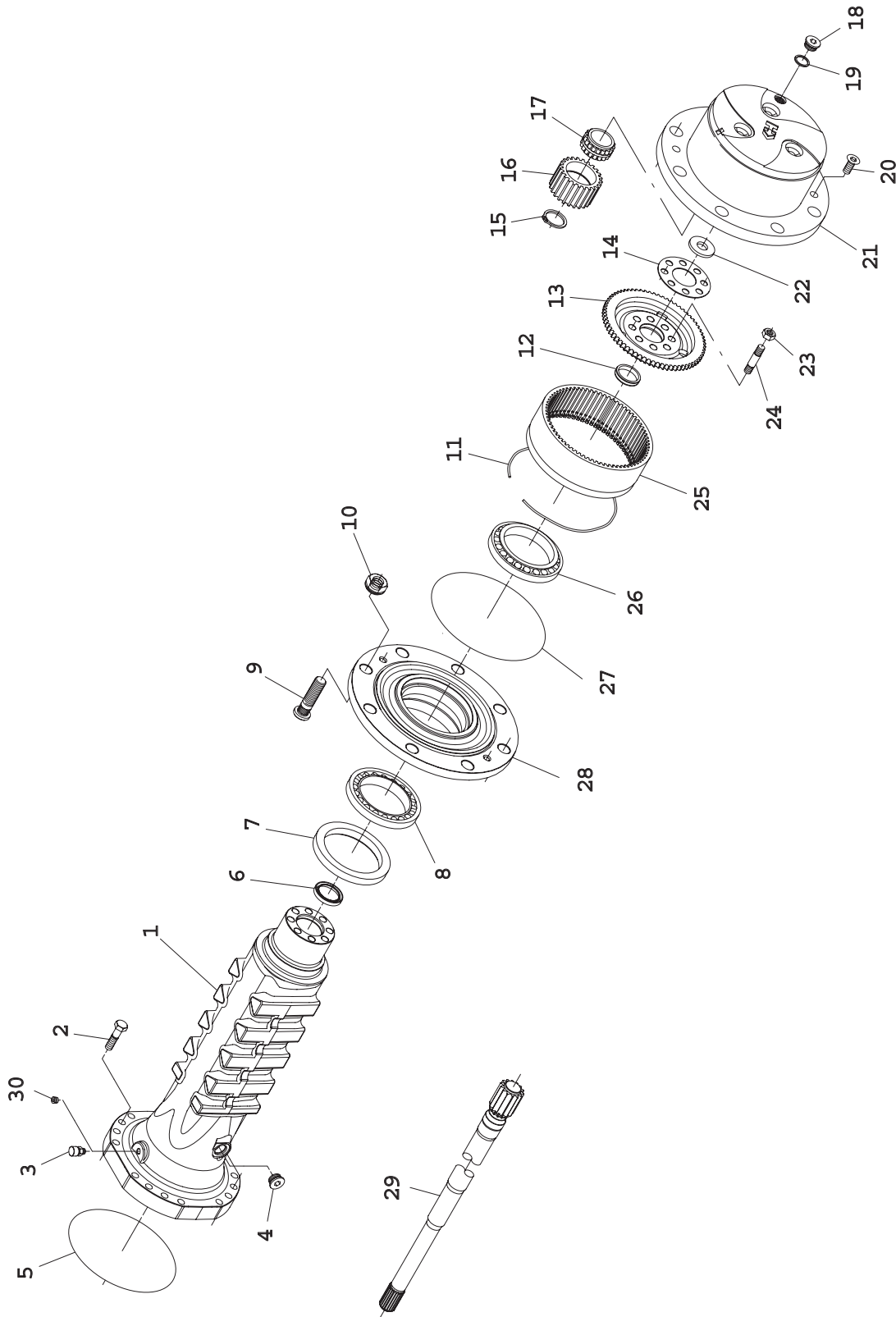


Fig 20. Front and Rear Hub Components

Transmission Drop-box

Maintenance Points

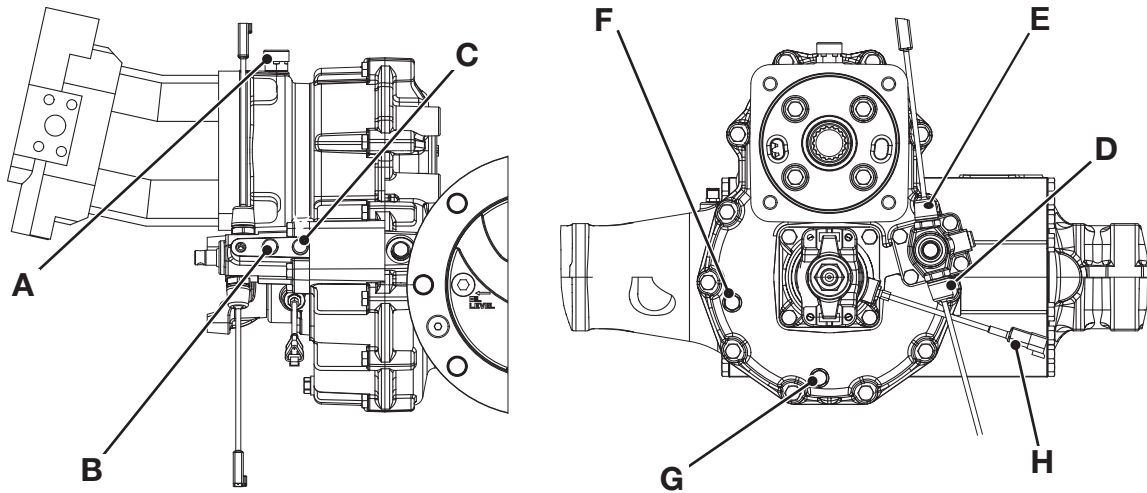


Fig 21.

DS367A-004

Table 4. Maintenance Points

A	Breather
B	Pressure Connector for Low Speed Selector Piston
C	Pressure Connector for High Speed Selector Piston
D	Solenoid Low Speed
E	Solenoid High Speed
F	Oil Level Plug
G	Oil Drain Plug
H	Output Shaft Speed Sensor



Section F - Transmission Transmission Drop-box

Maintenance Points

Page left intentionally blank