

Fig 11.

C107920

- 14 Remove the rear driveshafts. ⇒ [Drive Shafts - Rear \(F-63\)](#)
- 15 Remove the park brake disc. *Refer to Section G - Park Brake.*

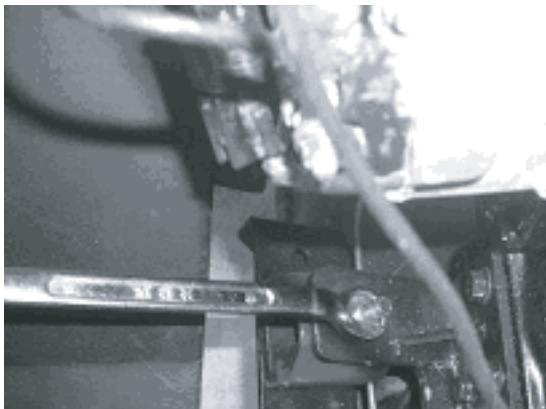


Fig 12.

C107930

- 16 Support the rear differential assembly from below. Remove the mounting screws and any associated brackets.
- 17 Disconnect the breather hose **G**.
- 18 Remove the differential mounting bolts **E**.

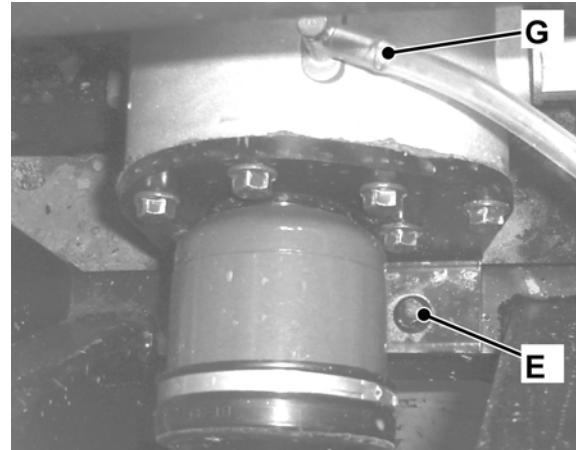


Fig 13.

C105480

- 19 Remove the differential from the machine.

Replacement

Replacement is the opposite of the removal procedure.

During the replacement procedure do this work also:

- Bleed the brake system, refer to **Section G - Brakes**.
- Adjust the steering alignment, refer to **Section H - Steering**.
- Test drive the machine by driving at a low speed to make sure that the steering and suspension are functioning correctly.

Dismantle and Assemble

Casing

Dismantle

- 1 Remove the drain plug **G** and washer **F** and drain the oil from the casing.
- 2 Remove the cover bolts **C** by slackening them off in a diagonal sequence.
- 3 Prise the cover **A** from the housing **E** at the prying points **C**.
- 4 Remove and discard the 'O' ring **D**.
- 5 Remove the park brake calliper bracket securing bolts **H**.
- 6 Remove the park brake calliper bracket **K** complete with oil seal **L**.
- 7 Remove the pinion cover **M** and 'O' ring **N**.
- 8 Remove the circlip **P**.
- 9 Remove the bearing **R** and pinion shaft **S** from the housing **U**.

- 10 Remove the spacer **T**.

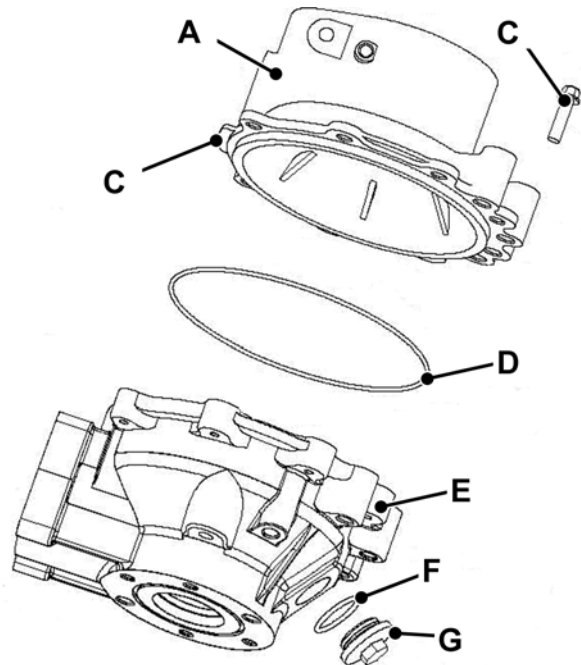


Fig 14.

C105330

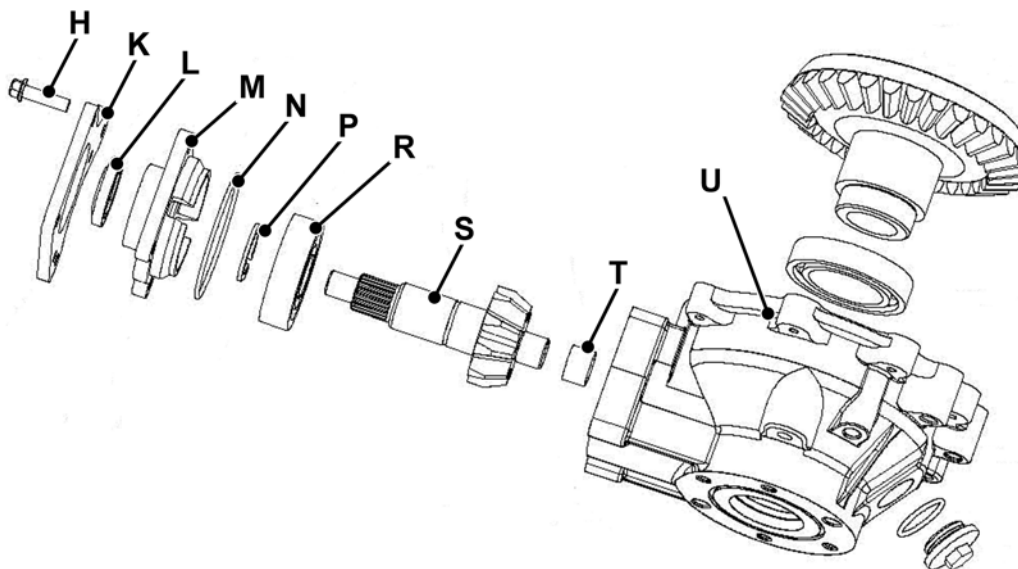


Fig 15.

C105320

Assembly

Assembly is the opposite of the dismantle procedure.

During the assembly procedure do this work also:

- Use new seals and 'O' rings. Make sure to apply grease to them before installation.
- Inspect the condition of the pinion shaft **S** spacer **T**, housing **E** and covers **A** and **M** for damage or wear. Replace as necessary.
- Install the pinion cover **M**, park brake calliper bracket **M** and bolts **H**. Tighten the bolts **H** in several stages until the cover **M** evenly touches the housing **U**. Rotate the pinion **S** and torque tighten the bolts **H** in several stages in a diagonal sequence. → [Torque Settings \(□ F-38\)](#)
- Upon completion make sure that the shafts turn smoothly without binding.

Table 1. Torque Settings

| Item | Nm | kgf m | lbf ft |
|-----------------------|----|-------|--------|
| A (10 mm bolt) | 45 | 4.5 | 33 |
| A (8 mm bolt) | 20 | 2.0 | 14 |

Rear Differential Components

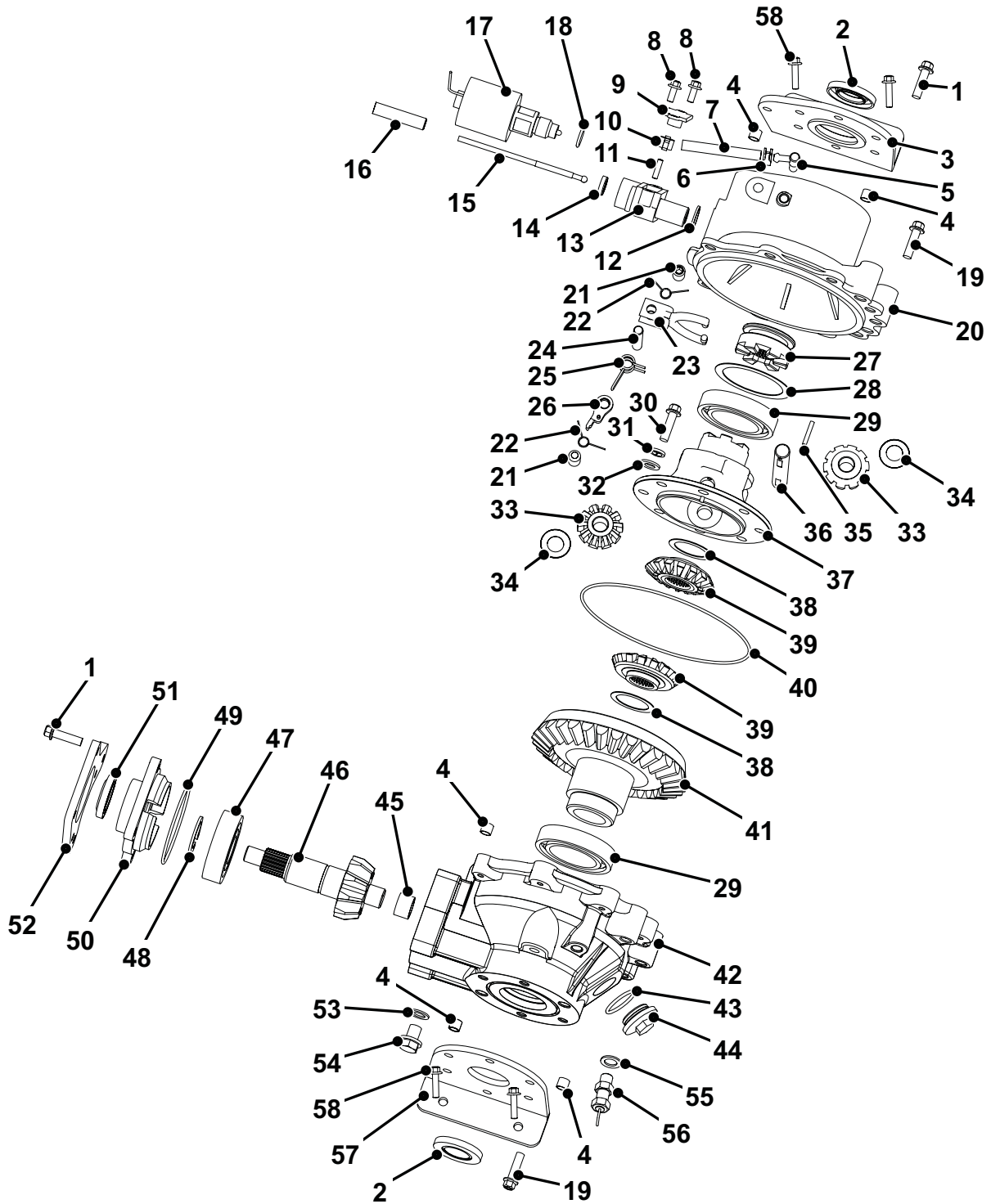


Fig 16.

C108270

Table 2. Rear Differential - Components

| ⇒ Fig 16. (□ F-39) | |
|--------------------|--------------------------|
| Item | Component |
| 1 | Bolt M8 x 30 |
| 2 | Oil seal |
| 3 | Seal housing |
| 4 | Pin |
| 5 | Hose adapter |
| 6 | Clip |
| 7 | Pipe |
| 8 | Bolt M6 x 15 |
| 9 | Transition box cover |
| 10 | Rocker arm |
| 11 | Pin M6 x 15 |
| 12 | Washer |
| 13 | Transition box |
| 14 | Oil seal |
| 15 | Bar |
| 16 | Insulation sheath |
| 17 | Solenoid |
| 18 | Seal |
| 19 | Bolt M8 x 25 |
| 20 | Rear differential cover |
| 21 | Plug pin |
| 22 | Spring |
| 23 | Selector fork |
| 24 | Shaft |
| 25 | Shift lever spring |
| 26 | Shift lever adapter |
| 27 | Differential shift hub |
| 28 | Washer |
| 29 | Bearing |
| 30 | Bolt M10 x 25 |
| 31 | Spring washer |
| 32 | Washer M10 |
| 33 | Differential planet gear |
| 34 | Washer |
| 35 | Pin 4 x 24 |
| 36 | Shaft |

| ⇒ Fig 16. (□ F-39) | |
|--------------------|--------------------------------|
| Item | Component |
| 37 | Differential case |
| 38 | Washer |
| 39 | Differential side gear |
| 40 | 'O' ring |
| 41 | Crown wheel |
| 42 | Pinion case |
| 43 | 'O' ring |
| 44 | Oil filler plug |
| 45 | Spacer |
| 46 | Pinion |
| 47 | Bearing |
| 48 | Circlip |
| 49 | 'O' ring |
| 50 | Pinion cover |
| 51 | Oil seal |
| 52 | Parking brake calliper bracket |
| 53 | Aluminium washer |
| 54 | Bolt M10 x 15 |
| 55 | Washer |
| 56 | Sensor |
| 57 | Seal housing |